



INSTRUCTIONS

Thank you for shopping at Car Builders.

In the table below, you can see where we have allocated individual products in the Troopy Packs. Below the table, we also have some product tips. Another helpful resource is our YouTube video where we install this pack [‘Sound Deadening a Toyota Land Cruiser Troopy’](#)



QR for video of install

For further questions or concerns, please contact us 03 8777 0960

**Please ensure you follow the allocation table for the pack you purchased*

Pack 1- Troopy Floor Pan, Quarter Panels and Doors Pack

	Front Floor (Firewall to under front seat)	Rear Quarter Panels	Rear Wheel Arches	Doors (incl. rear door/s)	Cargo Area	Roof
Sound Deadener	16 Sheets	12 sheets	8 sheets	12 sheets	-	-
Waterproof Underlay	2 boxes	-	-	-	-	-
Aluminium Tape	This will be used to border Sound Deadener in the quarter panels and doors					

Pack 2- Troopy Premium Floor Pan, Quarter Panels and Doors Pack

	Front Floor Pan (Firewall to under front seat)	Rear Quarter Panels	Rear Wheel Arches	Doors (incl. rear door/s)	Cargo Area	Roof
Sound Deadener	16 Sheets	12 sheets	8 sheets	12 sheets	-	-
Mass Noise Liner	2 Sheets	-	-	-	2 Sheets	-
Aluminium Tape	This will be used to border Sound Deadener in the quarter panels and doors					

Troopy Roof Pack

	Floor Pan	Quarter Panel/Wheel Arches	Doors (incl. rear door/s)	Cargo Area	Roof
Sound Deadener					2 boxes
Aluminium Tape	This will be used to border Sound Deadener in the roof.				

Pre-Cut Roof and Quarter Panel Insulation Packs

	Floor Pan	Quarter Panels	Wheel Arches	Cargo Area	Roof
Van Liner		12 Pre-cut Sheets			5 Pre-cut sheets
Four-Way Stretch Carpet		Pre-cut sheet			Pre-cut sheet
Premium Spray Adhesive	This will be used to secure the Van Liner to the roof if you are planning on carpeting the face of the Van Liner.				

Tips:

Sound Deadener:

Ensure the surface is clean using a white-based spirit. Map out the allocated Sound Deadener to visualise coverage. Lay the sheet on the surface to assess if/how it needs to be cut to fit in planned area. Reveal the backing of the Sound Deadener. Place an end on the surface and slowly lay it down in a rolling motion until the sheet is laying on the surface. Do not pull the deadener over any depression in the surface, rather feed it down into the valley. Use your application roller to apply moderate pressure evenly across the total surface. Use the handle of the roller to apply pressure in valley areas. Sheets can abut or slightly overlap. There may be sections with gaps between sheets. There is no need to apply to mounts, top hats, cross members etc (you are aiming to cover single sheet metal panels). Ensure you leave clearance for bolt down points and areas that require future access.

Waterproof Underlay / Insul-Layer:

Both foams are a peel and stick product. It is important to lay the foam down and carefully template the area it will cover before revealing the backing film. Ensure you have enough material to account for rises and falls in the shape you're applying it to. Once you have the template cut out, reveal one end of the product and line it up on the surface. Then slowly reveal the backing while rolling the material onto the surface, **ensuring you aren't stretching the product**, rather try to slightly compress the material. This is particularly important when rolling the material into depressions in the sheet metal. If you stretch the material over and then try to push it into a depression, the material will fight to pop back up. Use the application roller to apply a moderate pressure evenly across the total surface. If you happen to get an air pocket under the material, you can prick through the material to release the air and use the roller to press it down.

Mass Noise Liner

This product is not a peel and stick product. It will sit under its own weight on the floor pan. It is important to lay the product down and carefully template the area it will cover, allowing for rises and falls in the floor pan. We have several tips and trick in templating this product in vehicle installs on our YouTube channel.

Van Liner

This product is peel and stick and will hold itself inverted without issue. Because the glue is extruded at only a micron thick. If you are planning on carpeting over the top, we would highly recommend using our Premium Spray Adhesive to put down additional adhesive first. You will then be able to adhere the carpet directly to the face of the Van Liner

Four-Way Stretch Carpet

Our Four-Way Stretch Carpet has some "give" in every direction. This makes it very easy to apply to any surface and achieve positive looking results. Simply use our Premium Spray Adhesive to adhere this directly to the surface you are covering.

Premium Spray Adhesive

Our Premium Spray Adhesive has multiple pressures and variable nozzle. Twist the cap to the corresponding symbol to adjust the amount of glue, twist the nozzle to alter the web spray pattern from horizontal to vertical.

We would love to see your project and photos/video of your pack installed. Tag us in your social media so that we can give you a shout out on our social platforms.

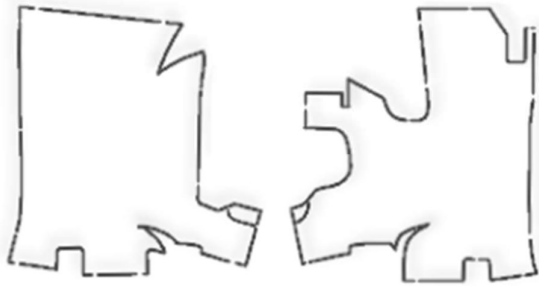


If you purchased the pre-cut packs, the templates are as below:

Flooring



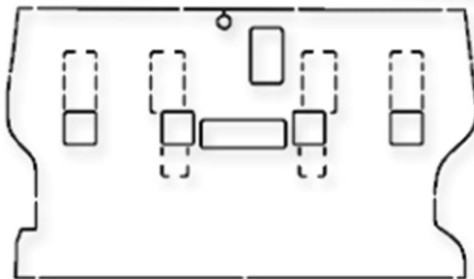
Troopy



Front of car



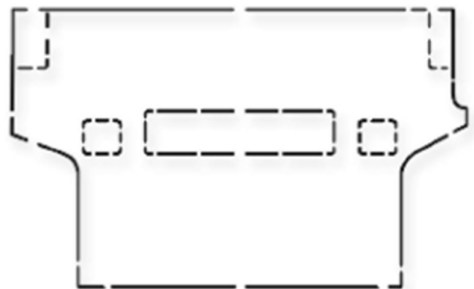
First row



Second row



For late model Troopy template information please scan the QR code



Third row

Interlinked pieces to be cut out if you are installing third row seating



Fourth row

Insulation

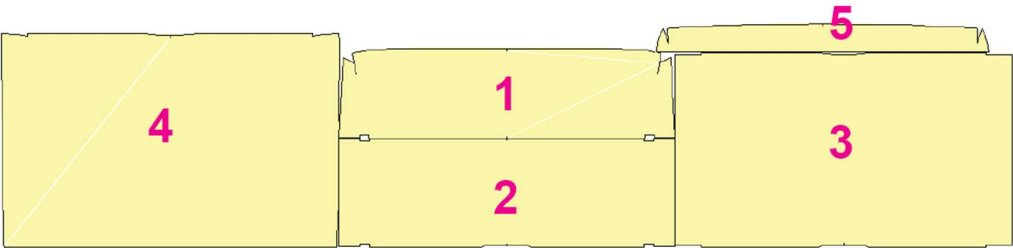
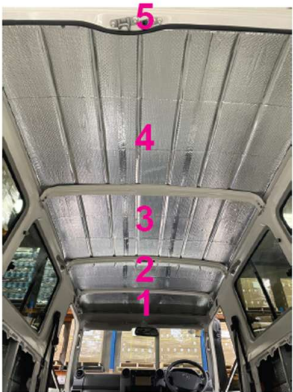


TROOPY ROOF INSULATION

→ Front of Car

IMPORTANT : We recommend using additional spray adhesive directly to Van Liner when installing in inverted positions. Due to the high temperature of the Australian climate our 120°C rated spray adhesive will give you extra long hold out and performance required, particularly when additional weight of carpet is applied to the finished Van Liner surface.

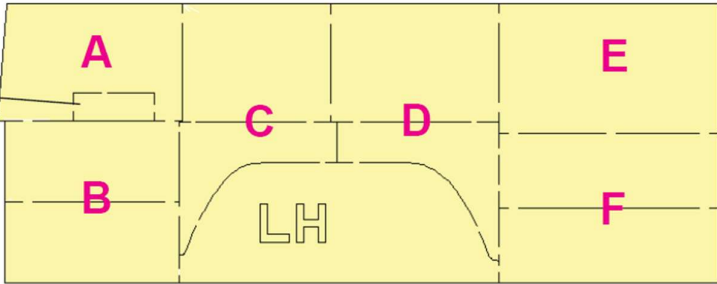
Placement of insulation runs from front to rear of vehicle as illustrated, follow number sequence as shown



TROOPY 1/4 PANEL INSULATION

→ Front of Car

Rectangle cut outs for rear vent



Placement of insulation illustrated on left hand side quarter panel. Please note right hand side is simply the opposite to this illustration

